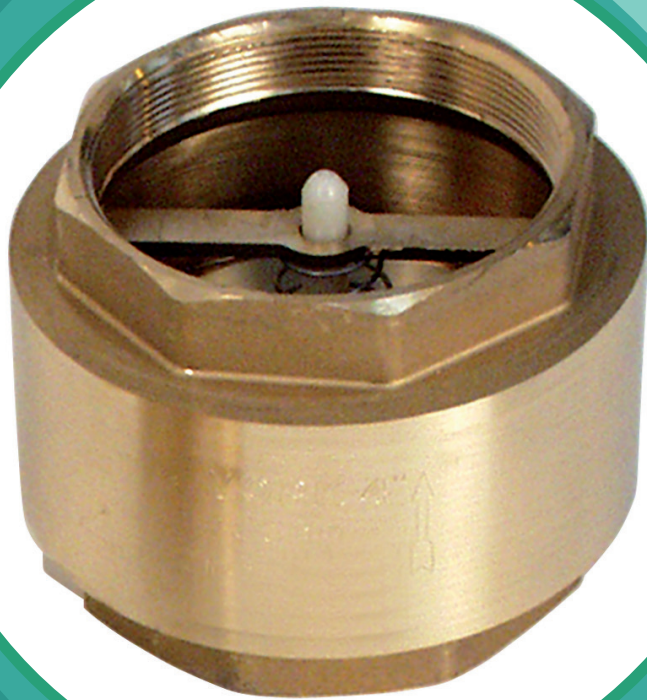


Brass Spring Check Valve

T-T Flow[®]
Valves



Two piece spring return check valve used to prevent reverse flow.

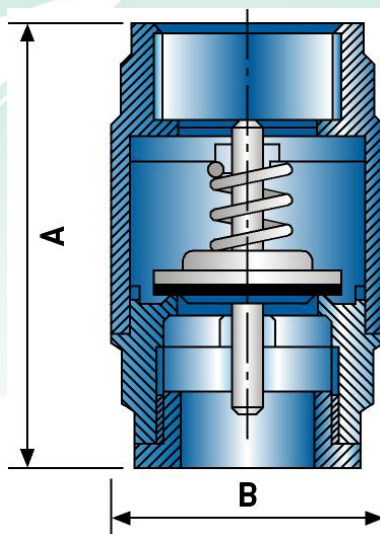
Suitable for many industrial and domestic applications up to 100°C.

Features

- Threaded BSP parallel
- Spring assisted
- Resilient seat
- Optional stainless steel strainer
- Suitable for both horizontal and vertical installation

Materials

- Body: Copper alloy CW617N
- Seat: NBR
- Seal Assembly: Nylon 6
- Spring: Stainless Steel AISI 302



Dimensions (mm)

| DN | A | B | PFA(Bar) |
|--------|-------|------|----------|
| 3/8" | 46.5 | 34.5 | 12 |
| 1/2" | 47 | 34.5 | 12 |
| 3/4" | 53 | 42 | 12 |
| 1" | 60.5 | 47.5 | 12 |
| 1 1/4" | 66.5 | 59.5 | 10 |
| 1 1/2" | 74 | 70.5 | 10 |
| 2" | 80 | 86 | 10 |
| 2 1/2" | 98 | 102 | 8 |
| 3" | 103 | 125 | 8 |
| 4" | 118.5 | 154 | 8 |

Dimensions in mm, unless otherwise stated. DN = Nominal Valve Size.
PFA = Allowable Operating Pressure

T-T Flow, Woore, Cheshire, CW3 9RU
Tel: 01630 647111 Fax: 01630 642100
www.ttflow.com e-mail: info@ttflow.com

We reserve the right to amend specifications without prior notice.
© T-T PUMPS Ltd. 2016 DATA353: 26/01/2016



T-T PUMPS[®]

T-T Pumping Stations[®]

T-T Controls[®]

T-T Service[®]

T-T Agricultural & Environmental[®]

T-T Flow Valves[®]