



Technical data FC 25-2F

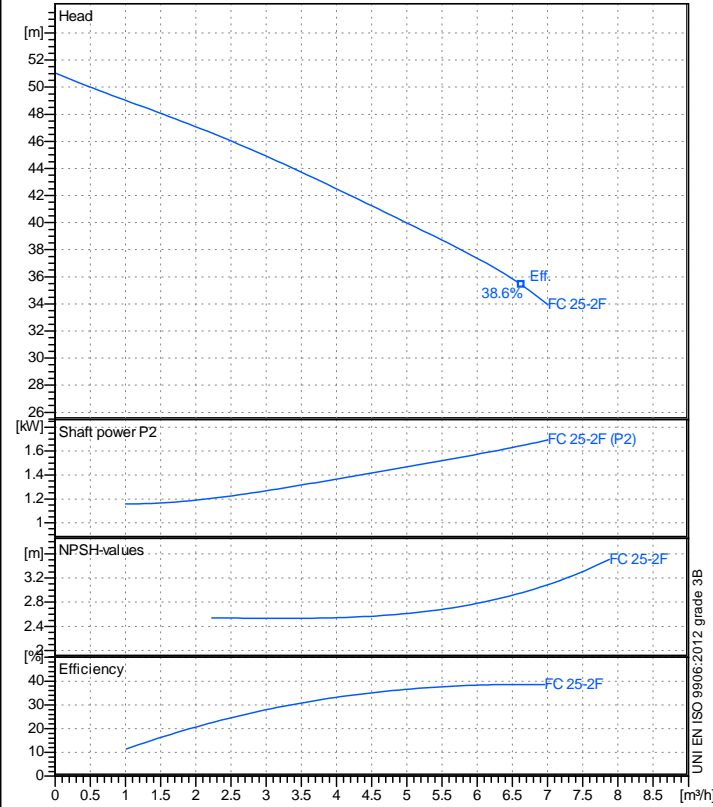
Revision no

Page:
1

Receiver

From

Company name
Respons. Department
Person in charge
Phone number
Fax no
E-mail address



Operating data specification

Nominal flow	m³/h 0
Nominal head	m 0
Static head	m 0
NPSH - v alue of plant	m 0
Inlet pressure	bar 0.09793
Fluid	Water, pure
Operating temperature t A	°C 20
Density at t A	kg/dm³ 0.9983
Kin. viscosity at t A	mm²/s 1.005

Pump

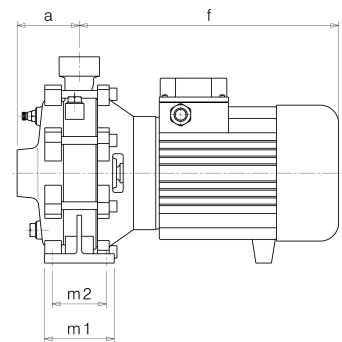
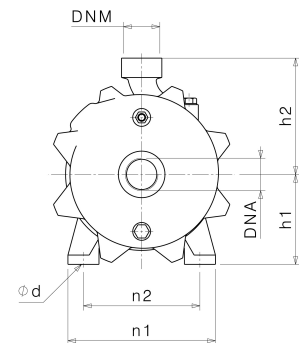
Pump name	FC 25-2F		
Size			
Design			
Speed 1/min	2850	No of stages	2
Impeller type			
Flow	Nominal	m³/h	
	Max-	m³/h 7	
	Min-	m³/h 0.00278	
Head	Nominal	m	
	Max-	m 51	
	Min-	m 33.9	
Head H(Q=0)	m 51		
NPSH 3%	m		
Max. working pressure	bar 5		
Shaft power	kW		
Efficiency	%		
Max absorbed power	kW 1.6938		

Materials Pump

Shaft	Stainless steel AISI 431 (1.4057)		
Impeller	Brass		
Pump body	Cast iron EN-GJL-200		
Support	Aluminium		
OR	NBR Rubber		
Mechanical seal	BXPG (Gra/Cer/NBR)		

Dimensions in mm

a	80
DNA	G 1 1/4"
DNM	G 1"
f	301
h1	115
h2	150
m1	90
m2	70
n1	190
n2	150
ød	12



Motor	Frame size	80		
Manufacturer / Type				
Rated power	kW	1.1	Efficiency 4/4	0 %
Electric current	A		Speed	1/min 2950
Electric voltage	V	230 V	1~	Hz 50
Starting mode	Unknown			
Degree of protection	IP 44	Insulation class	F	

Remarks:

Project	Project ID	Created by	Created on	Last update
---------	------------	------------	------------	-------------



Performance curves FC 25-2F

Revision no

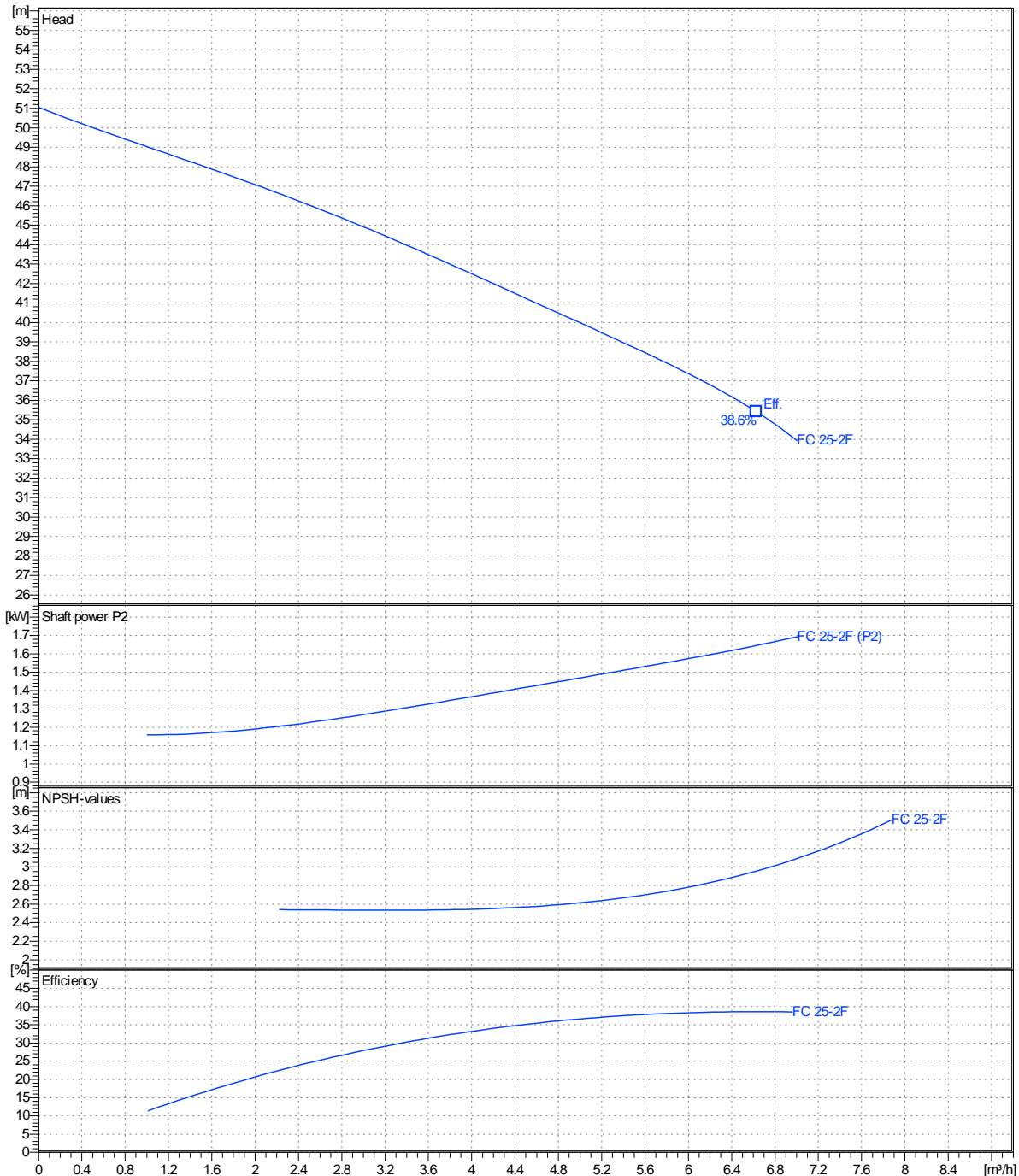
Page:
2

Receiver _____ From _____

Company name
Respons. Department
Person in charge
Phone number
Fax no
E-mail address

Operating area	Flow	Head	Impeller type
Operating data specification	0 m ³ /h	0 m	Impeller construction
Pump data	m ³ /h	m	Sense of rotation
			Clockwise from the drive end
			Outlet width
			G1"
	Flow	Head	Shaft power P2
	Min. Max. η Max.	H(Q=0) η Max.	P2(Q=0) Max. η Max.
	m ³ /h m ³ /h m ³ /h	m m	kW kW kW
	0.00278 7 6.63	51 35.4	1.69 1.65
			Speed 1/min 2850
			Frequency Hz 50 Hz

Performance data based to: Water, pure [100%] ; 20°C; 0.998kg/dm³; 1mm²/s UNI EN ISO 9906:2012 - Grade 3B



Project	Project ID	Created by	Created on	Last update
---------	------------	------------	------------	-------------